

SHEARS · SCISSORS · TINNERS' SNIPS

WISS

by



J. WISS & SONS CO. ESTABLISHED 1848 NEWARK, N. J. U.S.A.

WISS

J. Wiss & Sons Co.

33 Littleton Avenue
Newark, N. J.
U. S. A.

SHEARS - SCISSORS
TINNERS' SNIPS - ORANGE CLIPPERS
PRUNING SHEARS
HEDGE SHEARS - GRASS SHEARS



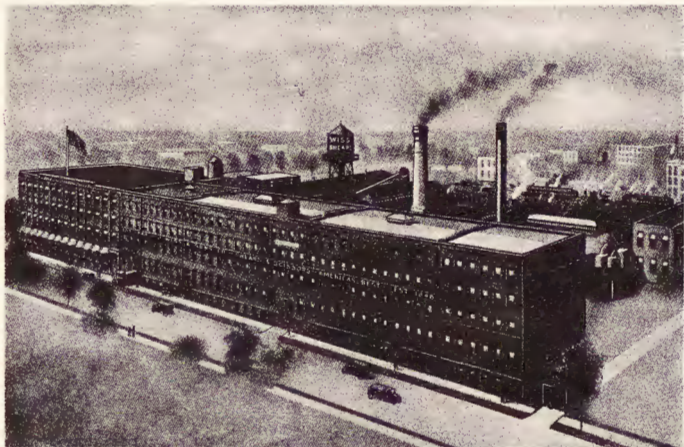
CATALOG No. 55-37

Copyright, 1937
J. WISS & SONS CO.

Revised March 15, 1941

ESTABLISHED 1848

NEWARK, N. J.
U. S. A.



Factories of J. Wiss & Sons Co. Contain Over 120,000 Square Feet of Floor Space

QUALITY WILL TELL

In 1848 Jacob Wiss, a Swiss instrument maker, opened a modest shop in Bank Street, Newark, N. J. He began to forge out instruments and a few pairs of shears—a trade he had learned thoroughly in Europe. He worked slowly and with infinite care, and presently people began to say Wiss Shears were the best they had ever used.

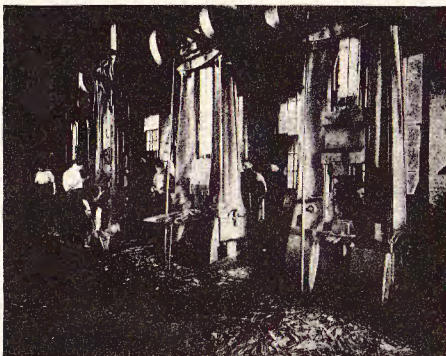
There was good reason for this approbation, for Wiss Shears were so well made that, after more than 50 years of service, some of the first pairs produced were still in use.

Slowly the Wiss enterprise grew; and in 1887, a small part of the present factory was built. It was devoted exclusively to the manufacture of fine shears and scissors, and soon it was crowded to capacity.

To-day the factories of J. Wiss & Sons Company are the largest of their kind in the world—and one of the principal reasons for their prodigious growth is a firm adherence to the policy of Jacob Wiss to produce nothing but goods of the highest quality.



In 1848 a dog-power treadmill was used

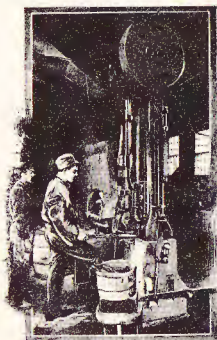


Wiss Forging Department where the frames of Wiss Shears are forged under powerful drop-hammers

HOW WISS SHEARS ARE MADE

To the average man or woman, one pair of shears is very much like another. As a matter of fact, there is a vast difference between Wiss Shears and those of inferior make; and we believe it is worth while to briefly describe our more important operations. If the dealer is acquainted with these points, he can easily satisfy his customers of the superior quality of Wiss Shears; and also see for himself why this quality means a better investment. We recommend that both dealers and their clerks familiarize themselves with these details, as they will be found of great assistance in selling cutlery.

FORGING THE FRAME



Welding the hard cutting edge to the tough frame

The frame of Wiss Shears is forged from a very tough special forging steel under a powerful drop-hammer. This steel is used because it renders the frame practically unbreakable, and because its toughness and pliability in the initial stages of manufacture permit the permanent adjustment so necessary to smooth cutting blades.

It also makes it possible to mould the handles to exactly the correct shape. You can hammer, bend, and twist the handles of Wiss Shears and still not break them.

As a result of this process, we produce shears that will stand up under severe strains for years—with handles properly fitted to the hand—and blades so accurately adjusted that they cut the goods without gnawing and with the least possible effort.

WELDING THE CUTTING EDGE

After the frame has been forged, a piece of the finest crucible steel is welded to the inner side of the blade. This forms the cutting edge, and the two pieces, after welding, become one and forever inseparable.

Crucible steel is used because it takes a very hard degree of temper, and therefore can take and hold the keenest possible edge. Thus we obtain cutting edges that will stay sharp for an indefinite time.



Hardening the Wiss Shear Blade

DRILLING THE SCREW HOLE

After welding, the blade must be trimmed of all surplus metal to restore its proper shape. The screw hole is then drilled; and although this is apparently a simple operation, it is done with the utmost care and precision. The position and size of the hole must be exact to the thousandth part of an inch, otherwise the blades would be loose, and the shears would not cut smoothly—a condition often found in shears of inferior quality.

HARDENING AND TEMPERING

The blade is now ready for hardening. It is heated to a fixed degree and, while hot, plunged into a tank of running water.



"Peening" or Straightening



Grinding

"PEENING" AND GRINDING

The rigors of hardening and tempering have left their imprint upon the blade, so that it is now warped and crooked. It must be "peened" or straightened, into proper shape.

A skillful mechanic places the blade on an anvil and taps it carefully with a light hammer until the desired shape is secured.

The blade is still crude but soon loses its rough appearance when ground on various stones, measuring from fifteen inches to six feet in diameter.

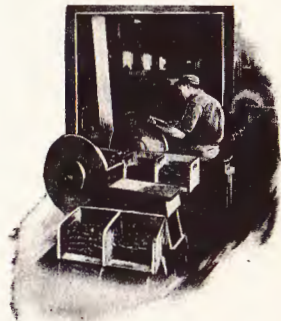


Finishing

After hardening, the blade is tempered. It is placed in a special solution, and heat treated in such a way that the steel is made tough and durable. This operation is so accurately regulated that the blades of all Wiss Shears are of uniform temper or hardness.

This is of great importance, for whenever there is even a slight difference in temper, the harder blade will wear into the softer one, greatly shortening the life of the shears, and no amount of grinding or sharpening can ever remedy this condition.

It is largely because of their evenly tempered blades that Wiss Shears last a lifetime.



Polishing

THE FINISHING TOUCHES

Up to this stage the blades have been treated separately. Now they are paired, and screwed together, and put into perfect shape.

The shears are next polished, nickel plated or japanned, as the case may be—and then finished.

Expert finishers take each one and adjust the blades so that they come together in a perfectly straight line with an even tension. The cutting qualities are then thoroughly tested to make sure that the finishing has been done properly.

The shears are now ready for their final inspection. They are gone over carefully, and should any defects be discovered, that pair is promptly discarded, for no shears that are imperfect are ever branded "WISS".

HOW WISS CRUCIBLE STEEL INLAID BLADES ARE MADE

Showing the Shear Blade in Various Stages of Development

All products designated as having Crucible Steel Inlaid Blades are made in the manner here described.

SOLID STEEL

Products designed as Solid Steel are made from a single piece of crucible steel, for the sake of lightness and daintiness.



Showing how it is possible to twist and bend the handles of Wiss Shears without breaking them

REGULAR WISS SHEAR BOLT



Furnished with Nos. 3, 3 1/2, 4, 4 1/2, "N" Tailors' Shears.

WISS SIMPLEX SHEAR BOLT



The Wiss Simplex Bolt was designed so as to readily allow tailors' shears to be taken apart to remove lint and dust which collects under the bolt. It has only two parts and is quickly and correctly assembled. There are no levers or springs, and a turn of the small adjusting screw in the nut gives exactly the required tension. The Wiss Simplex Bolt is furnished with Wiss "N" pattern Tailors' Shears when so ordered, without extra charge.



HEAVY "N" PATTERN

**TAILORS' SHEARS
HEAVY "N" PATTERN**

Japanned Handles Polished Blades
Regular or Simplex Bolt
Crucible Steel Inlaid Blades

Number	Full Length	Length of Cut	Average Weight Each
5N	13 in.	6 ³ / ₈ in.	2 ¹ / ₄ lbs.
6N	13 ¹ / ₂ in.	6 ³ / ₄ in.	2 ³ / ₈ lbs.
7N	14 in.	7 in.	2 ¹ / ₂ lbs.
8N	14 ¹ / ₂ in.	7 ³ / ₈ in.	2 ³ / ₄ lbs.
9N	15 in.	7 ⁵ / ₈ in.	2 ⁷ / ₈ lbs.
10N	15 ¹ / ₂ in.	8 in.	3 ³ / ₄ lbs.
11N	16 in.	8 ¹ / ₄ in.	4 lbs.

For use with Left Hand

Number	Full Length	Length of Cut	Average Weight Each
5N L.H.	13 in.	6 ³ / ₈ in.	2 ¹ / ₄ lbs.



LIGHT "N" PATTERN

**TAILORS' SHEARS
LIGHT "N" PATTERN**

Japanned Handles Polished Blades
Regular or Simplex Bolt
Crucible Steel Inlaid Blades

Number	Full Length	Length of Cut	Average Weight Each
3 N	12 in.	6 ¹ / ₈ in.	1 ³ / ₄ lbs.
3 ¹ / ₂ N	12 ¹ / ₂ in.	6 ¹ / ₄ in.	1 ⁷ / ₈ lbs.
4 N	12 ³ / ₄ in.	6 ¹ / ₄ in.	1 ⁷ / ₈ lbs.
4 ¹ / ₂ N	13 in.	6 ⁵ / ₈ in.	2 ¹ / ₈ lbs.

CARPET OR UPHOLSTERERS' SHEARS



Crucible Steel Inlaid Blades
Fitted with Steel Screw and Nut
Japanned Handles
Polished Blades

Number	Full Length	Length of Cut	Average Weight Each
2 I.S.	10 ¹ / ₂ in.	5 in.	1 ³ / ₈ lbs.
3 I.S.	11 ¹ / ₄ in.	5 ¹ / ₂ in.	1 ¹ / ₂ lbs.
4 I.S.	12 in.	6 ¹ / ₄ in.	1 ⁵ / ₈ lbs.
5 I.S.	12 ¹ / ₂ in.	6 ² / ₃ in.	1 ³ / ₄ lbs.

CARPET OR UPHOLSTERERS' SHEARS



Raised Blade
Crucible Steel Inlaid Blades
Fitted with Steel Screw and Nut
Japanned Handles
Polished Blades

Number	Full Length	Length of Cut	Average Weight Each
3 N.I.S.	12 in.	6 in.	1 ⁵ / ₈ lbs.

BENT TRIMMERS

Raised Blade

Crucible Steel Inlaid Blades

Heavy Pattern

With Japanned Handles and Nickeled Blades

Fitted with Steel Screw and Nut



Number	Full Length	Length of Cut	Average Weight per Doz.
20W	10 in.	4 $\frac{7}{8}$ in.	10 $\frac{1}{2}$ lbs.
21W	11 in.	5 $\frac{3}{8}$ in.	12 lbs.
22W	12 in.	6 in.	17 lbs.

Fitted with facile screw bolt at small additional cost.

TAILORS' POINTS

Solid Steel

Japanned Handles and Nickeled Blades

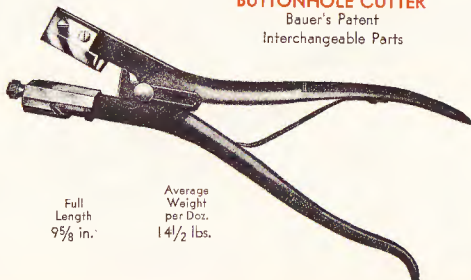


Number	Full Length	Length of Cut	Average Weight per Doz.
74	4 in.	1 $\frac{3}{4}$ in.	13 ozs.
75	5 in.	2 in.	1 $\frac{1}{2}$ lbs.
76	6 in.	2 $\frac{3}{4}$ in.	2 lbs.

BUTTONHOLE CUTTER

Bauer's Patent

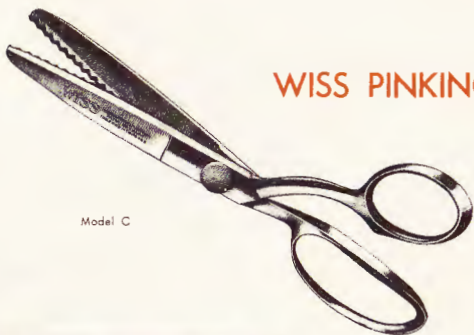
Interchangeable Parts



Full Length
9 $\frac{5}{8}$ in.

Average Weight per Doz.
14 $\frac{1}{2}$ lbs.

WISS PINKING SHEARS



Model C

These amazing shears do away with hours of labor and add style to frocks and gowns—the smart neatly pinked seams, ruffles, collars, scarfs, etc., found in the best professional tailoring.



MODEL C

They also suggest many other short cuts and economies—pinking in place of picotting, bias binding and rolled edges, and to turn out inexpensive doilies, shelf-covers, etc.

Model	Length o/a	Length of Blade	Weight Each
C	9 in.	3 1/2 in.	9 oz.

Furnished also in Chromium Plate.



Model A

HEAVY DUTY MODEL "A"
FOR INDUSTRIAL USE

For use on heavier fabrics, aeroplane cloth, swatches and tailors' samples.

Made with aluminum bodies and replaceable Blades.

Model	Length o/a	Length of Blade	Weight Each
A	11 in.	4 1/8 in.	14 oz.

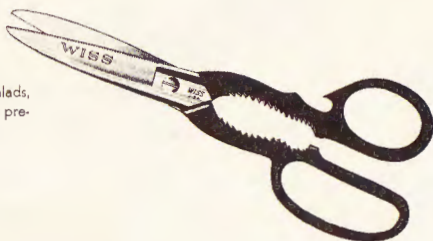
WISS

THE NEW WISS KITCHEN SHEARS

WITH SERRATED BLADE—BOTTLE WRENCH, ETC.

No. 1 K. S. The Housewife's Chief Helper

Better than any knife for preparing fruits, salads, fish—trimming meats, etc. The serrated blade prevents objects slipping while being cut.



OTHER NOVEL FEATURES



FOR DE CAPPING BEVERAGE BOTTLES

The notch in the handle is for quickly removing beverage bottle caps—another handy feature.



FOR UNSCREWING BOTTLE CAPS

An original feature is the two sets of teeth inside the handles for unscrewing tightly fitting caps from ketchup bottles, etc., of varying sizes, and for cracking nuts.

All-round utility shears with serrated blade, bottle wrenches, etc. Beautifully finished with lacquered handles in six colors, **Green, Blue, Red, Ivory, Black and Yellow**, and with heavily nickeled blades. They are of rugged construction—can be easily cleaned—and are quite ornamental. In addition to the main features illustrated, they can be used for emergency jobs around the kitchen, such as cutting twine, rope, cloth, etc. In fact, they are the handiest tool in the kitchen—and many people use them in the garden too.



This fascinating 4 colored display stand makes customers **STOP—LOOK—HANDLE** and usually **BUY**. It holds 6 Kitchen Shears of assorted colors and is 17" high by 10½" wide and fitted with a double wing easel.

No.
I-K.S.

Length
8 in.

Weight
per Doz.
4½ lbs.

Also furnished in Chromium Plate.

NEWARK, N. J.
U. S. A.

NEW CHROMIUM PLATED SCISSORS

We believe that the new Chromium-plated assortment represents THE BIGGEST STEP TAKEN IN THE SHEARS AND SCISSORS INDUSTRY IN THE LAST 20 YEARS.

We experimented with chromium plating for many months, and discovered that a chromium plating such as we have perfected does the following things:

First—Chromium plating is rust-resisting. It keeps the shears new and shiny indefinitely.

Second—The chromium plating protects the edges. It keeps the shears sharp longer.

Third—Chromium plating gives a smoother cut than is available with nickel-plated shears.

Fourth—The Combination of these things provides scissors that are unquestionably the most durable and longest wearing ever made.

DRESSMAKING SHEARS

Number	Full Length	Length of Cut	Weight per Doz.
C-127	7 in.	3 $\frac{1}{8}$ in.	3 lbs.
C-127 $\frac{1}{2}$	7 $\frac{1}{2}$ in.	3 $\frac{3}{8}$ in.	3 $\frac{1}{2}$ lbs.
C-128	8 in.	3 $\frac{3}{4}$ in.	4 $\frac{1}{2}$ lbs.

HOUSEHOLD SHEARS

Number	Full Length	Length of Cut	Weight per Doz.
C-136	6 in.	2 $\frac{3}{4}$ in.	2 lbs.
C-137	7 in.	3 $\frac{1}{4}$ in.	3 lbs.
C-137 $\frac{1}{2}$	7 $\frac{1}{2}$ in.	3 $\frac{1}{2}$ in.	3 $\frac{1}{2}$ lbs.
C-138	8 in.	3 $\frac{7}{8}$ in.	4 $\frac{1}{4}$ lbs.

SEWING SCISSORS

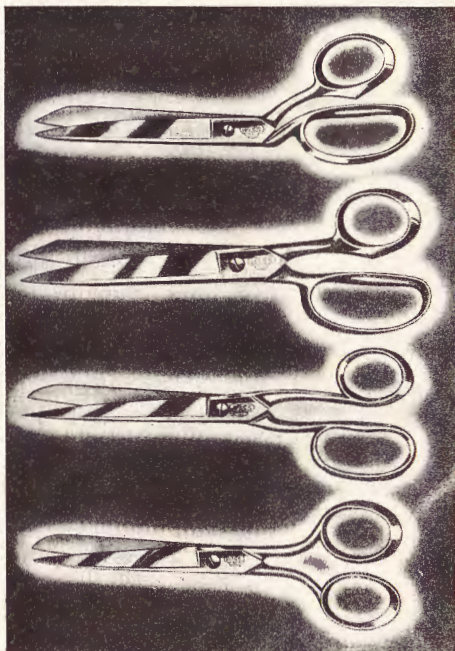
TRIMMER HANDLES

Number	Full Length	Length of Cut	Weight per Doz.
C-336	6 in.	2 $\frac{5}{8}$ in.	1 $\frac{3}{8}$ lbs.
C-336 $\frac{1}{2}$	6 $\frac{1}{2}$ in.	3 in.	1 $\frac{5}{8}$ lbs.
C-337	7 in.	3 $\frac{3}{8}$ in.	1 $\frac{7}{8}$ lbs.

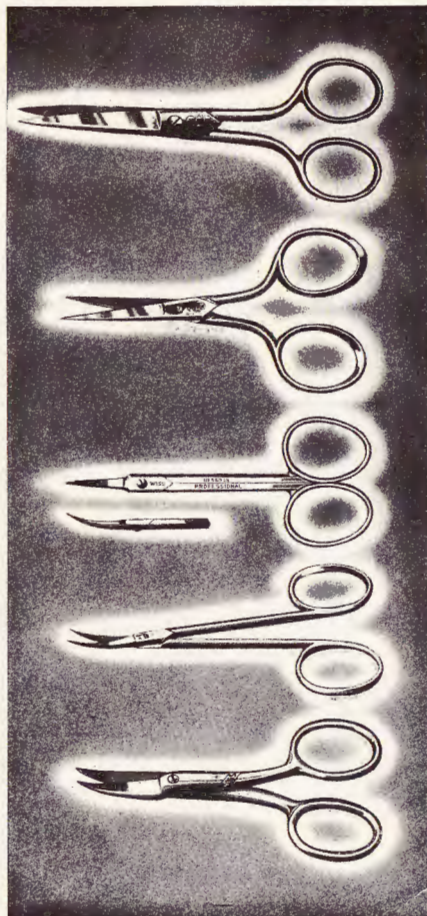
LADIES SCISSORS

RING BOWS

Number	Full Length	Length of Cut	Weight per Doz.
C-815	5 in.	2 $\frac{1}{4}$ in.	1 lb.
C-816	6 in.	2 $\frac{3}{4}$ in.	1 $\frac{1}{2}$ lbs.



NEW CHROMIUM PLATED SCISSORS



LADIES SCISSORS

OVAL PATTERN

Number	Full Length	Length of Cut	Weight per Doz.
C-763 $\frac{1}{2}$	3 $\frac{1}{2}$ in.	1 $\frac{1}{4}$ in.	$\frac{1}{2}$ lb.
C-764	4 in.	1 $\frac{1}{2}$ in.	$\frac{5}{8}$ lb.
C-765	5 in.	2 in.	1 lb.
C-766	6 in.	2 $\frac{1}{2}$ in.	1 $\frac{1}{2}$ lbs.

EMBROIDERY SCISSORS

NEEDLE SHARP POINTS

Number	Full Length	Length of Cut	Weight per Doz.
C-773 $\frac{1}{2}$	3 $\frac{1}{2}$ in.	1 $\frac{1}{4}$ in.	$\frac{3}{8}$ lb.

PROFESSIONAL TYPE

MANICURE SCISSORS

Number	Full Length	Weight per Doz.
C-563 $\frac{1}{2}$	3 $\frac{1}{2}$ in.	7 oz.

MANICURE OR CUTICLE SCISSORS

Number	Full Length	Weight per Doz.
C-573	3 in.	5 oz.
C-573 $\frac{3}{4}$	3 $\frac{3}{4}$ in.	6 oz.

PEDICURE SCISSORS

Number	Full Length	Weight per Doz.
C-623 $\frac{1}{2}$	3 $\frac{1}{2}$ in.	11 oz.

NAIL SCISSORS

(Not Illustrated)

Number	Full Length	Weight per Doz.
C-663 $\frac{1}{2}$	3 $\frac{1}{2}$ in.	10 oz.

BENT TRIMMERS

Crucible Steel Inlaid Blades

The handles are so bent that cloth or other material can be cut lying flat on the table. Whenever this is necessary or to advantage, the Bent Trimmer will be found ideal. Used by professional cloth cutters, dressmakers, and others. Bent Trimmers nine and a half inches or over are made with two sharp points; smaller sizes with one sharp and one blunt point. Made with crucible steel inlaid blades, and finished in either full nickel plate or with japanned handles and nickeled blades. They are smooth cutting and stay sharp.

Nine-inch size and larger are fitted with special steel screw and nut.



Bent Trimmers

Full Nickel Plated Number	Japanned Handles Number	Full Length	Length of Cut	Average Weight per Doz.
126	26	6 in.	2 1/2 in.	2 lbs.
126 1/2	26 1/2	6 1/2 in.	2 3/4 in.	2 1/2 lbs.
127	27	7 in.	3 1/8 in.	3 lbs.
127 1/2	27 1/2	7 1/2 in.	3 3/8 in.	3 1/2 lbs.
128	28	8 in.	3 3/4 in.	4 1/2 lbs.
128 1/2	28 1/2	8 1/2 in.	4 in.	5 1/4 lbs.
.....	29	9 in.	4 1/4 in.	6 3/4 lbs.
.....	29 1/2	9 1/2 in.	4 1/4 in.	8 1/2 lbs.
.....	20	10 in.	5 in.	9 1/4 lbs.
.....	21	11 in.	5 3/8 in.	10 3/4 lbs.
.....	22	12 in.	6 1/4 in.	14 1/2 lbs.
.....	23	13 in.	6 3/4 in.	18 3/4 lbs.

For use with Left Hand. Japanned handles only.

Number	Full Length	Length of Cut	Average Weight per Doz.
20 L.H.	10 in.	4 3/4 in.	9 lbs.
21 L.H.	11 in.	5 1/2 in.	9 1/2 lbs.



Straight Trimmers

STRAIGHT TRIMMERS

Crucible Steel Inlaid Blades

Generally known as the household or dressmaking shear. The most popular pattern made. A perfect cutting shear of unusual excellence. Straight Trimmers, ten inches or over, are made with two sharp points; the smaller sizes have one sharp and one blunt point. Made with Crucible Steel Inlaid Blades. Handsomely finished in either full nickel plate, or with japanned handles and nickled blades. The properly designed handles and perfect adjustment make it possible for one to use them for hours without tiring the hand.

Nine-inch size and larger are fitted with special steel screw and nut.

Full Nickel Plated Number	Japanned Handles Number	Full Length	Length of Cut	Average Weight per Doz.
135 1/2	35 1/2	5 1/2 in.	2 1/2 in.	1 3/4 lbs.
136	36	6 in.	2 3/4 in.	2 lbs.
136 1/2	36 1/2	6 1/2 in.	3 in.	2 5/8 lbs.
137	37	7 in.	3 1/4 in.	3 lbs.
137 1/2	37 1/2	7 1/2 in.	3 1/2 in.	3 1/2 lbs.
138	38	8 in.	3 3/8 in.	4 1/4 lbs.
138 1/2	38 1/2	8 1/2 in.	4 in.	4 7/8 lbs.
.....	39	9 in.	4 1/4 in.	6 lbs.
.....	30	10 in.	5 in.	9 lbs.
.....	32	12 in.	6 1/8 in.	14 3/4 lbs.

Made for use with Left Hand

Full Nickel Plated Number	Japanned Handles Number	Full Length	Length of Cut	Average Weight per Doz.
137 1/2 L.H.	37 1/2 L.H.	7 1/2 in.	3 1/2 in.	3 1/2 lbs.

LADIES' SCISSORS

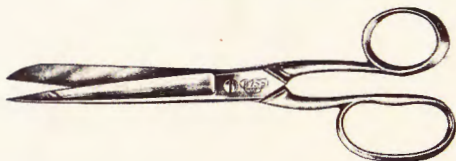
Ladies' or Trimming Scissors are designed for millinery, mending, darning, and for all work on light fabrics. With the sharp point, it is possible to pick out and snip threads from the daintiest work. Wiss Ladies' Scissors are of finest quality, pleasing design, and beautiful finish. They will be a welcome addition to the home work basket—and for professional use they prove exceptionally efficient.

LADIES SCISSORS

Solid Steel

With Trimmer Handles. Extra Fine Full Nickel Finish.

Number	Full Length	Length of Cut	Average Weight per Doz.
335½	5½ in.	2¾ in.	1⅞ lbs.
336	6 in.	2⅝ in.	1¾ lbs.
336½	6½ in.	3 in.	1⅝ lbs.
337	7 in.	3⅜ in.	1⅞ lbs.
337½	7½ in.	3⅝ in.	2½ lbs.



LADIES SCISSORS

Solid Steel

With Fitted Bows. Extra Fine Full Nickel Finish.

Number	Full Length	Length of Cut	Average Weight per Doz.
814	4 in.	1¾ in.	⅝ lb.
814½	4½ in.	2 in.	¾ lb.
815	5 in.	2¼ in.	1 lb.
815½	5½ in.	2½ in.	1¼ lbs.
816	6 in.	2¾ in.	1½ lbs.
816½	6½ in.	3 in.	1¾ lbs.



EMBROIDERY SCISSORS

Solid Steel

Flat Pattern. Fitted Bows. Sharp Points.

Extra Fine Full Nickel Finish.

Number	Full Length	Length of Cut	Average Weight per Doz.
773	3 in.	1 in.	¼ lb.
773½	3½ in.	1¼ in.	⅓ lb.
774	4 in.	1½ in.	½ lb.
774½	4½ in.	1¾ in.	⅝ lb.
775	5 in.	2¼ in.	⅞ lb.
775½	5½ in.	2½ in.	1¼ lbs.



EXTRA FINE-NEEDLE POINTS

773½	N.P.	3½ in.	1¼ in.	⅓ lb.
774	N.P.	4 in.	1½ in.	½ lb.

SEWING AND EMBROIDERY SCISSORS

Solid Steel

Oval Pattern, Double Sharp Points, Full Nickel Finish.



Number	Full Length	Length of Cut	Average Weight per Doz.
763	3 in.	1 in.	$\frac{3}{8}$ lb.
763 $\frac{1}{2}$	3 $\frac{1}{2}$ in.	1 $\frac{1}{4}$ in.	$\frac{1}{2}$ lb.
764	4 in.	1 $\frac{1}{2}$ in.	$\frac{5}{8}$ lb.
764 $\frac{1}{2}$	4 $\frac{1}{2}$ in.	1 $\frac{3}{4}$ in.	$\frac{7}{8}$ lb.
765	5 in.	2 in.	1 lb.
765 $\frac{1}{2}$	5 $\frac{1}{2}$ in.	2 $\frac{1}{4}$ in.	1 $\frac{1}{4}$ lbs.
766	6 in.	2 $\frac{1}{2}$ in.	1 $\frac{1}{2}$ lbs.

LADIES SCISSORS

Solid Steel

Flat Pattern, Ring Handles.

Ideal for heavy work in household or factory.

Full Nickel Finish.



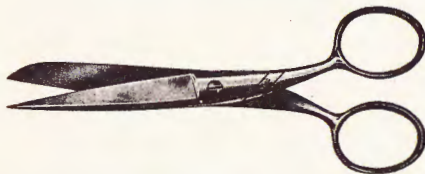
Full Nickel Plated Number	Japnd. Handles Number	Full Length	Length of Cut	Average Weight per Doz.
154 $\frac{1}{2}$	54 $\frac{1}{2}$	4 $\frac{1}{2}$ in.	2 in.	1 lb.
155	*55	5 in.	2 $\frac{1}{4}$ in.	1 $\frac{1}{4}$ lbs.
155 $\frac{1}{2}$	55 $\frac{1}{2}$	5 $\frac{1}{2}$ in.	2 $\frac{1}{2}$ in.	1 $\frac{1}{2}$ lbs.
156	56	6 in.	2 $\frac{3}{4}$ in.	1 $\frac{3}{4}$ lbs.
156 $\frac{1}{2}$	56 $\frac{1}{2}$	6 $\frac{1}{2}$ in.	3 in.	2 lbs.

*These are in great demand for use as School Scissors.

LADIES SCISSORS

Solid Steel

Jointless Pattern, Full Nickel Finish.



Number	Full Length	Length of Cut	Average Weight per Doz.
104	4 in.	1 $\frac{3}{4}$ in.	$\frac{3}{4}$ lb.
105	5 in.	2 $\frac{1}{2}$ in.	1 lb.
106	6 in.	3 in.	1 $\frac{3}{8}$ lbs.

APPLIQUE SCISSORS

Solid Steel

Curved Blade, Full Nickel Finish.



Specially Designed for Applique Work

Number	Full Length	Length of Cut	Average Weight per Doz.
5	5 in.	1 $\frac{3}{4}$ in.	1 $\frac{1}{2}$ lbs.
5 $\frac{1}{2}$	5 $\frac{1}{2}$ in.	1 $\frac{3}{4}$ in.	1 $\frac{3}{8}$ lbs.

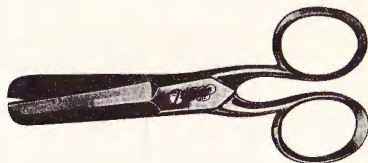
POCKET SCISSORS

For those who sell piece goods, or whose work requires them to have scissors constantly at hand. Made with blunt points so they can be safely carried in the pocket or on a ribbon or cord.

POCKET SCISSORS

Solid Steel
Swedged Pattern. Fully Nickel Plated.

Number	Full Length	Length of Cut	Average Weight per Doz.
364	4 in.	1 1/2 in.	1 lb.
365	5 in.	2 in.	1 1/2 lbs.
366	6 in.	2 3/4 in.	2 1/8 lbs.

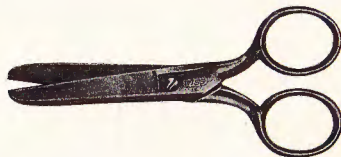


POCKET SCISSORS

Solid Steel
Finished in Full Nickel.
Plate or with Japanned Handles and
Nicked Blades.

Full Nickel Plated Number	Japnd. Handles Number	Full Length	Length of Cut	Average Weight per Doz.
164	*64	4 in.	1 3/4 in.	1 lb.
164 1/2	64 1/2	4 1/2 in.	2 in.	1 1/4 lbs.
165	65	5 in.	2 1/4 in.	1 1/2 lbs.

*These are very popular for use as School Scissors.



POCKET SCISSORS

Solid Steel
Light Pattern. Fully Nickel Plated.

Number	Full Length	Length of Cut	Average Weight per Doz.
463 1/2	3 1/2 in.	1 1/4 in.	5/8 lb.
464	4 in.	1 1/2 in.	7/8 lb.



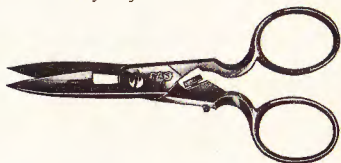
BUTTONHOLE SCISSORS

Solid Steel
Light Pattern. Fully Nickel Plated.

Improved adjustment prevents set screw from catching in light fabrics.

Number	Full Length	Average Weight per Doz.
44	4 1/4 in.	1 lb.

Will cut buttonholes any size up to 1 inch.



STATIONERS' BANKERS' SHEARS AND PAPER HANGERS' SHEARS



In Full Nickel Plated Finish or with Japanned Handles and Nickeled Blades.

Full Nickel Plated Number	Japnd. Handles Number	Full Length	Length of Cut	Average Weight per Doz.
189	89	9 in.	4 $\frac{7}{8}$ in.	4 lbs.
180	80	10 in.	5 $\frac{1}{2}$ in.	5 $\frac{1}{2}$ lbs.
182	82	12 in.	7 $\frac{1}{8}$ in.	8 $\frac{1}{2}$ lbs.
184	84	14 in.	9 in.	9 $\frac{3}{4}$ lbs.

EDITORS' OR DESK SCISSORS



With Ring Handles

Fully Nickel Plated or with Japanned Handles and Nickeled Blades

Full Nickel Plated Number	Japnd. Handles Number	Full Length	Length of Cut	Average Weight per Doz.
198	98	8 in.	5 in.	2 $\frac{1}{4}$ lbs.
199	99	9 in.	5 $\frac{3}{4}$ in.	2 $\frac{1}{2}$ lbs.
190L	90L	10 in.	6 $\frac{3}{4}$ in.	2 $\frac{3}{4}$ lbs.

NEW PROFESSIONAL MANICURE SCISSORS RAZOR STEEL

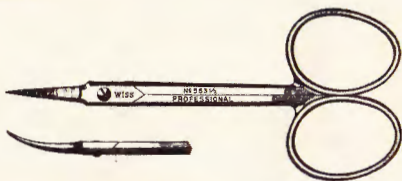
For Right or Left Hand Use. Oversize Screws.

Heavy Hexagon Shanks. Full Nickel Finish.

Curved Blades. Needle Propoints.

Newly developed professional model—forged from razor steel of exceptional hardness accurately tempered; the cutting edge will stay sharp a long time.

Number	Full Length	Weight per Doz.
563 $\frac{1}{4}$	3 $\frac{1}{4}$ in.	7 oz.
563 $\frac{1}{2}$	3 $\frac{1}{2}$ in.	7 oz.



PROFESSIONAL MANICURE SCISSORS

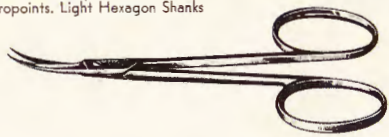
For Professional Use Only

Curved Blades. Needle-fine Propoints. Light Hexagon Shanks

Special cuticle scissors with very fine needle points. Designed for professional use in manicure shops—for the finest and lightest work only.

WITH CURVED BLADES

Number	Full Length	Weight per Doz.
583 $\frac{1}{2}$	3 $\frac{1}{2}$ in.	$\frac{1}{4}$ lb.

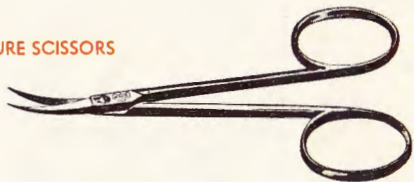


MANICURE SCISSORS

Solid Steel. Fully Nickel Plated. Curved Blades.

Extra Fine Finish

Number	Full Length	Weight per Doz.
573	3 in.	5 oz.
573 $\frac{3}{4}$	3 $\frac{3}{4}$ in.	6 oz.



MANICURE SCISSORS

Jointless Pattern

Full Nickel Plated Handles. Polished Blades.

Solid Steel

Number	Full Length	Weight per Doz.
503	3 in.	6 oz.
503 $\frac{3}{4}$	3 $\frac{3}{4}$ in.	8 oz.



BABIES' SAFETY SCISSORS

Blunt Points. Jointless Pattern. Full Nickel Finish.

These Safety Scissors are made with blunt points for use on Babies' Toe and Fingernails. They will not prick or pinch when in use. Strongly recommended for home use and in Hospitals, Nurseries and Schools.

Number	Length	Weight per Doz.
B 503	3 in.	6 oz.
B 503 $\frac{3}{4}$	3 $\frac{3}{4}$ in.	8 oz.



NEW NAIL CUTTER FOR MANICURE AND PEDICURE USE



Solid Steel
Curved or Straight Blades
Fully Nickel Plated

Solid Steel
No. 625

Will Cut the Toughest Nails. Drop Forged from Cutlery Steel. Curved Blades. High Nickel Finish. Volute Spring. Palm Grip Handles. Strong. Durable. Lasting.

These new style Wiss Nail Cutters are designed especially for cutting thick, heavy nails, but will cut fine nails as well. The specially designed handles fit comfortably in the palm of the hand in a natural position for easy working. They are fitted with a special catch for keeping the cutters closed when not in use. A spring washer in the screw gives correct tension.

Number
625

Full Length
4 $\frac{7}{8}$ in.

Average Weight
per Doz.
2 $\frac{3}{4}$ lbs.

NAIL SCISSORS

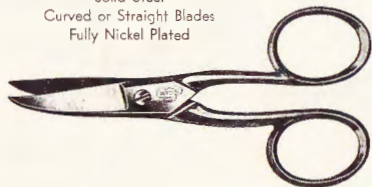
CURVED BLADES

Number	Full Length	Average Weight per Doz.
663	3 in.	8 oz.
*663 $\frac{1}{2}$	3 $\frac{1}{2}$ in.	10 oz.
*664	4 in.	13 oz.

STRAIGHT BLADES

Number	Full Length	Average Weight per Doz.
*633 $\frac{1}{2}$	3 $\frac{1}{2}$ in.	10 oz.
*634	4 in.	13 oz.

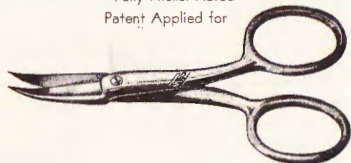
*Furnished with File backs.



PEDICURE SCISSORS

Designed for trimming heavy finger and toe nails. The extra long handles provide great leverage and ease in cutting.

Solid Steel
Curved or Straight Blades
Fully Nickel Plated
Patent Applied for



CURVED BLADES

Number	Full Length	Average Weight per Doz.
623 $\frac{1}{2}$	3 $\frac{1}{2}$ in.	11 oz.
624 $\frac{1}{2}$	4 $\frac{1}{2}$ in.	22 oz.

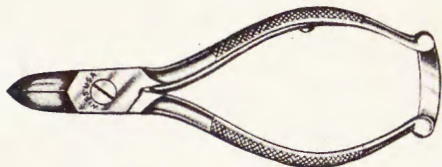
STRAIGHT BLADES

Number	Full Length	Average Weight per Doz.
603 $\frac{1}{2}$	3 $\frac{1}{2}$ in.	11 oz.

NAIL NIPPERS

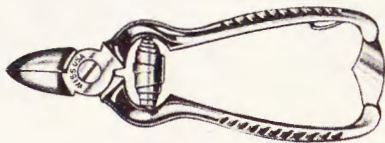
Wiss Nail Nippers are made with the same finely tempered edges and accuracy of adjustment that characterizes the Manicure Nippers. Their special design permits them to be resharpened more often and more conveniently than other makes.

They are strongly yet lightly built, well jointed and cut the toughest toe or finger nails with ease. Each Nail Nipper is individually tested before leaving the factory.



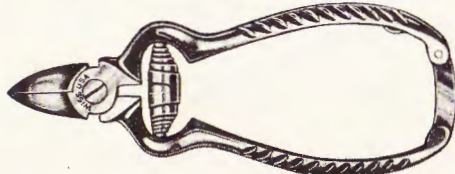
PLAIN PATTERN—LAP JOINT

No.	Length	Finish	Approximate Weight Per Doz.
1200	4 in.	Full Nickel	2 lbs.



FANCY PATTERN—LAP JOINT

No.	Length	Finish	Approximate Weight Per Doz.
2225	4 1/2 in.	Full Nickel	2 1/4 lbs.

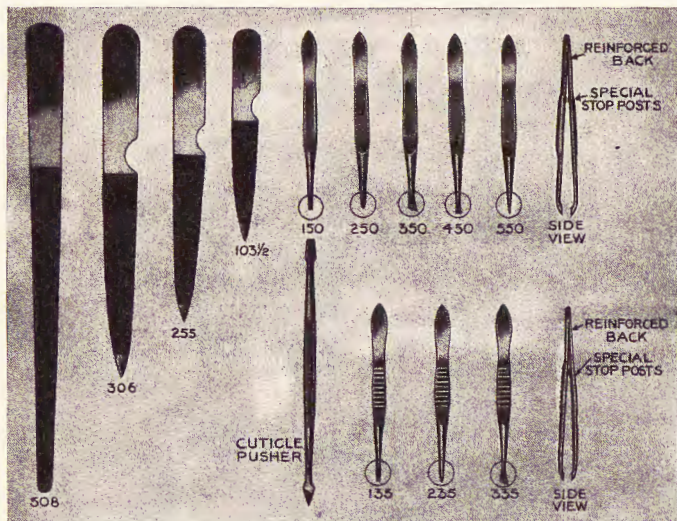


FANCY PATTERN—LAP JOINT

Volute Spring and Special Catch

No.	Length	Finish	Approximate Weight Per Doz.
3275	4 1/2 in.	Full Nickel	2 1/4 lbs.

TOILET ACCESSORIES



TWEEZERS

The points of Wiss Tweezers are accurately matched to the finest fraction of an inch—the inside of each point is milled to give a surer grip—and there's a point to suit every purpose. All Tweezers 3" long.

Made in two qualities—A and B

A	B	Description of Point	Approximate Weight Per Doz.
Stock No. 150	Stock No. 135	1/8" Square Point	4 oz.
250	235	Offset Semi-Needle Point	4 oz.
350	335	1/8" Bias or Oblique Point	4 oz.
450	—	1/16" Square Point	4 oz.
550	—	Offset Needle Point	4 oz.

FILES

Every Wiss nail file is made to give that velvet smooth cut that is essential to the perfectly finished manicure. Each file is made of specially tempered carbon steel cut absolutely uniform as to depth and spacing and has full polished handles, points, and sides.

Stock No.	Length	Description	Approximate Weight Per Doz.
103 1/2	3 1/2"	Triple cut pocket file	3 oz.
255	5"	Triple cut handy file	3 oz.
306	6"	Triple cut professional file	4 oz.
508	8"	Triple cut professional file	4 oz.

CUTICLE PUSHER AND CLEANER

It is neatly designed, made of good quality steel and fully nickel plated.

Stock No.	Length	Description	Approximate Weight Per Doz.
201	4 1/2"	Combined pusher and cleaner-point	4 oz.

BARBERS' SHEARS

The success of the barber using Wiss Barbers' Shears is limited only by his own skill. From the time they are forged of finest crucible steel until their final inspection, none but expert hands touch them. Wiss Barbers' Shears are ground to the sharpest possible edge; are scientifically tempered to insure long life and so cleverly adjusted that they cut just as well at the extreme points as at the base of the blades. In finish and design they reflect their fine quality. No barbers' shears can be better.

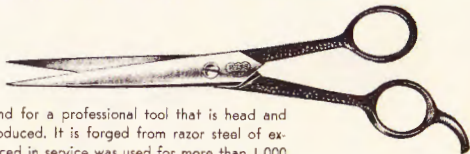
No. 1000 BARBERS' SHEARS

"The Shear of 1,000 Haircuts." Special Alloy Steel.

One Blade Yankee Pattern. One Blade French Pattern. Hammered Finish.

Can be furnished in softer temper for serrating when specified.

This pattern is made to meet the demand for a professional tool that is head and shoulders above anything ever before produced. It is forged from razor steel of exceptional hardness—and the first pair placed in service was used for more than 1,000 haircuts without re-edging.



Number	Full Length	Length of Cut	Average Weight per Doz.
*1000	7 $\frac{1}{4}$ in.	3 in.	1 $\frac{3}{4}$ lbs.

"SUPREME" BARBERS' SHEARS

Razor Steel. Polished Blades.
Special Gun Metal Handles

A new pattern, made of the same extra-hard razor steel used in our famous No. 1000. Hardened tool steel screw, for holding blades in adjustment. Raised cutting edges, which make it easy for grinders to re-edge shears to cut perfectly. Special handles of unusual design, with comfortable fitted bows.



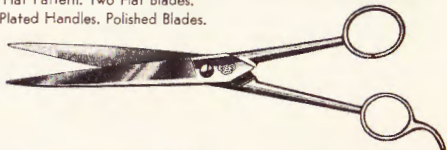
Number	Full Length	Length of Cut	Average Weight per Doz.
1001	7 $\frac{3}{4}$ in.	3 $\frac{1}{4}$ in.	2 $\frac{1}{4}$ lbs.

BARBERS' SHEARS

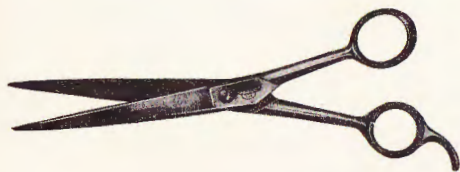
Solid Steel

New Flat Pattern. Two Flat Blades.
Nickel Plated Handles. Polished Blades.

Number	Full Length	Length of Cut	Average Weight per Doz.
446 $\frac{1}{2}$	6 $\frac{1}{2}$ in.	2 $\frac{3}{8}$ in.	1 $\frac{1}{4}$ lbs.
447	7 in.	2 $\frac{3}{4}$ in.	1 $\frac{1}{2}$ lbs.
447 $\frac{1}{2}$	7 $\frac{1}{2}$ in.	3 $\frac{1}{4}$ in.	1 $\frac{3}{4}$ lbs.



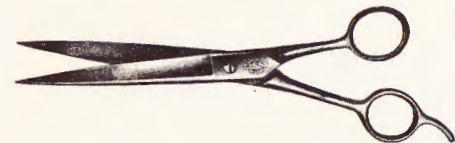
All solid steel barbers' shears may be had with serrated edge at small additional cost. We recommend that one blade only be serrated.



BARBERS' SHEARS

Solid Steel
American Pattern
Nickel Plated Handles. Polished Blades.
Extra Fine Finish

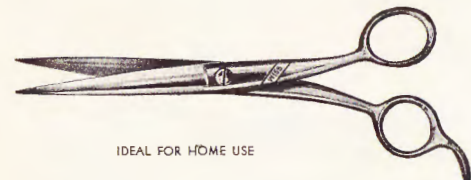
Number	Full Length	Length of Cut	Average Weight per Doz.
347 $\frac{1}{2}$	7 $\frac{1}{2}$ in.	3 $\frac{1}{8}$ in.	1 $\frac{3}{4}$ lbs.
348	8 in.	3 $\frac{1}{2}$ in.	1 $\frac{7}{8}$ lbs.



BARBERS' SHEARS

Crucible Steel
Inlaid Blades
American Pattern

Full Nickel Plated Number	Japnd. Handles Number	Full Length	Length of Cut	Average Weight per Doz.
147	47	7 in.	3 $\frac{1}{8}$ in.	1 $\frac{1}{2}$ lbs.
147 $\frac{1}{2}$	47 $\frac{1}{2}$	7 $\frac{1}{2}$ in.	3 $\frac{3}{8}$ in.	2 lbs.
148	48	8 in.	3 $\frac{5}{8}$ in.	2 $\frac{1}{4}$ lbs.
148 $\frac{1}{2}$	48 $\frac{1}{2}$	8 $\frac{1}{2}$ in.	3 $\frac{7}{8}$ in.	2 $\frac{1}{2}$ lbs.



IDEAL FOR HOME USE

BARBERS' SHEARS

Solid Steel
Jointless Pattern
Smooth Handles
Fully Nickel Plated

This pattern is made to meet the demand for fine quality barbers' shears at an extremely moderate price.

Number	Full Length	Length of Cut	Average Weight per Doz.
407 $\frac{1}{2}$	7 $\frac{1}{2}$ in.	3 in.	1 $\frac{3}{4}$ lbs.



BARBERS' SHEARS

Solid Steel
American Pattern
Wiss Ideal Pattern. Two Styles.
Nickel Plated Handles

Number	Full Length	Length of Cut	Average Weight per Doz.
125	7 $\frac{1}{2}$ in.	3 $\frac{1}{4}$ in.	1 $\frac{3}{4}$ lbs.

Number	Full Length	Length of Cut	Average Weight per Doz.
100	7 $\frac{1}{2}$ in.	3 $\frac{1}{4}$ in.	1 $\frac{3}{4}$ lbs.

All solid steel barbers' shears may be had with serrated edge at small additional cost. We recommend that one blade only be serrated.

STRAIGHT TRIMMERS

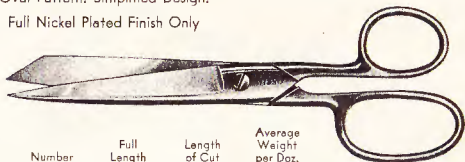
No. 999. Solid Steel.

Oval Pattern. Simplified Design.

Full Nickel Plated Finish Only

A special pattern, which sells at a lower price than standard inlaid Wiss Shears. Made of solid steel with full nickel finish, and excellent cutting qualities.

The low price is the result of simplified and improved design.



Number	Full Length	Length of Cut	Average Weight per Doz.
999	7 $\frac{1}{4}$ in.	3 $\frac{1}{4}$ in.	2 $\frac{3}{4}$ lbs.

The latest type rug shear . . . light and well-balanced. The double sharp points are invaluable for inserting in tightly threaded loops.

The handles are offset to the proper degree to allow the blades to lie flush with surface of rug when clipping loops and leveling off the threads.

IMPROVED RUG SHEARS

Offset Handles. Double Sharp.



Number	Length Overall	Weight per Doz.
R.S.-7 $\frac{1}{2}$	7 $\frac{1}{2}$ in.	3 $\frac{1}{2}$ lbs.

THE NEW THREAD CLIPPER

No. C-7. Three Styles.

Style One: With Sharp Points.

For weavers and knitting mill workers; also used in clothing and garment trades. Has extra fine points that cut clean at every snip. Dull finish. Non-slipping nickel plated handles. Polished blades.



Style Two: Blunt Points.

The blunt points are preferred on underwear inspection, cutting tapes, etc., when sharp points would be a disadvantage.

Style Three: Blunt Points. Ring on Handle.

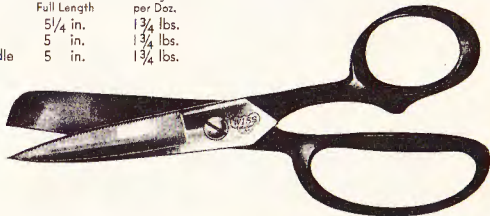
This pattern is furnished with a holding ring on the side of the handle to enable operators on looms to work with the fingers when necessary without laying down the clippers.

No. Style	Pattern	Full Length	Average Weight per Doz.
C7-1	Sharp Points	5 $\frac{1}{4}$ in.	1 $\frac{3}{4}$ lbs.
C7-2	Blunt Points	5 in.	1 $\frac{3}{4}$ lbs.
C7-3	Blunt Points—Ring on Handle	5 in.	1 $\frac{3}{4}$ lbs.

LEATHER OR BELT SHEARS

Crucible Steel Inlaid Blades

Full Length	Length of Cut	Average Weight per Doz.
8 in.	2 $\frac{3}{4}$ in.	7 $\frac{3}{8}$ lbs.
9 in.	3 in.	11 $\frac{1}{4}$ lbs.



TIRE AND FETLOCK SHEARS

Crucible Steel Inlaid Blades



Trimmer Handles. Curved Blades.

Japanned Handles

Number	Full Length	Length of Cut	Average Weight per Doz.
01	9 in.	4 in.	6 $\frac{3}{8}$ lbs.

Also furnished with Straight Blades

RUBBER SHEARS

Crucible Steel Inlaid Blades. Full Nickel Finish or Japanned Handles.



Steel Screw and Nut

Extra heavy and especially hard-tempered to withstand the strain of rubber cutting. Can be used for an indefinite time without tiring the hand.

Full Nickel Plated Number	Japanned Handles Number	Full Length	Length of Cut	Average Weight per Doz.
139 $\frac{1}{2}$	39 $\frac{1}{2}$	9 $\frac{3}{4}$ in.	4 $\frac{1}{2}$ in.	8 $\frac{1}{4}$ lbs.

CANDY OR GLASS SHEARS

Crucible Steel Inlaid Blades. Three Patterns. Japanned Handles.



Straight Pattern

Fitted with Screw and Nut

Full Length	Length of Cut	Average Weight per Doz.
11 in.	5 $\frac{1}{4}$ in.	13 $\frac{7}{8}$ lbs.

Extra Heavy Pattern

With Special Bolt and Nut.

Wide Handles

Full Length	Length of Cut	Average Weight per Doz.
10 $\frac{1}{2}$ in.	5 in.	13 lbs.

Heavy Pattern

Bent Handles

Full Length	Length of Cut	Average Weight per Doz.
12 $\frac{1}{2}$ in.	6 $\frac{1}{8}$ in.	18 $\frac{3}{8}$ lbs.

For Glass Shears specify whether double sharp or double blunt points are desired.



WISS

SURGICAL SCISSORS

In making Wiss Surgical Scissors due consideration is given to the serious and delicate nature of the work for which they are to be employed.

Wiss Surgical Scissors will be found far superior to those of foreign make, and they merit absolute dependence in the most critical operation.

Prices On Application

STRAIGHT BLADES

Furnished with three style points, i.e., one sharp, one blunt, double blunt, double sharp.

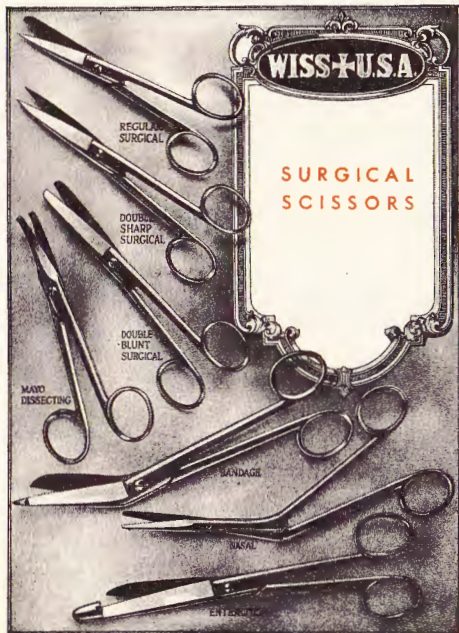
Length Overall	Approx. Wt. per Doz.
4½ in.	1 lb.
5 in.	1¼ lbs.
5½ in.	1½ lbs.

CURVED BLADES, DOUBLE SHARP.

Length Overall	Approx. Wt. per Doz.
5½ in.	1½ lbs.

STRAIGHT MAYO

Length Overall	Approx. Wt. per Doz.
5½ in.	1½ lbs.
6¾ in.	2½ lbs.



CURVED BLADE MAYO

Length Overall	Approx. Wt. per Doz.
5½ in.	1½ lbs.
6¾ in.	2½ lbs.

BANDAGE

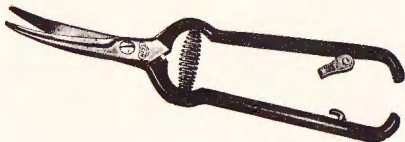
Length Overall	Approx. Wt. per Doz.
5½ in.	1¾ lbs.
5½ in. Stainless Steel	1¾ lbs.
7 in.	2¾ lbs.

NASAL

Length Overall	Approx. Wt. per Doz.
7 in.	1⅞ lbs.

FLOWER AND THINNING SHEARS No. C-4

Slightly Curved Blades
(Straight Blades When So Ordered)



A high grade forged steel tool. Ideal for cutting flowers in garden and greenhouse. Also used for picking small fruits, thinning out blossoms—and for removing inferior grapes from large clusters. Handles have a new and improved catch, which stays out of the way when the tool is in use.

Number	Full Length	Wt. per Doz.
C-4	7½ in.	3⅝ lbs.

HEAVY PATTERN

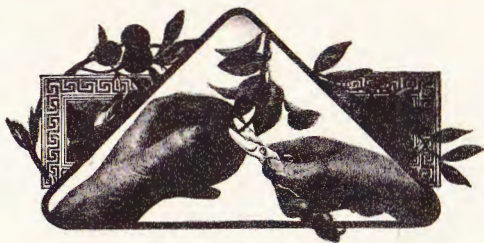
Number	Full Length	Wt. per Doz.
C-4A	7½ in.	4½ lbs.

FLOWER HOLDER SHEARS No. F. H. 2



Cuts and holds roses and other flowers direct from bush without injuring or crushing stem.
Furnished in two styles . . . heavily nickel plated throughout . . . or with polished face and lacquered handle.

Number	Finish	Length Overall	Weight per Doz.
F.H. 2	Full Nickel	7¼ in.	3¼ lbs.
F.H. 2-G	{ Polished Face Green Handle	7¼ in.	3¼ lbs.



WISS ORANGE CLIPPERS

are endorsed by United States Government Experts and leading citrus growers everywhere. Wiss Orange Clippers last longer, do better work and save money by minimizing the liability of bruising fruit. The blades are specially curved and ground—the points and outer edges are smoothed and rounded to avoid bruising. Handles are shaped to prevent tiring of the hand. Springs are made of best piano steel wire—brass plated. The Wiss Orange Clipper is scientifically correct, and is made entirely of the finest materials. It is unrestrictedly guaranteed to give satisfaction.

"SAFETY" ORANGE CLIPPER WITH GUARD



"A New Model"

Special guard attachment and cupped blunt-pointed blades enable these safety clippers to nip off stems closer than regular clippers without bruising fruit.

The most rigidly-built orange clipper on the market. Improved bolt with large bearing surface under head insures extreme rigidity

This guard attachment is usually only found on high-priced clippers.

Flared Handles shaped to be held in palm of hand . . . give more speed, greater accuracy and are non-tiring. Perfectly Tempered Blades give long-wearing edges.

Strong Flexible Spring of piano steel wire.

No holding clips to bother operator.

New Type posts hold springs securely.

This new model Wiss "Safety" Orange Clipper with guard is designed by experts in the field to give the utmost in safety and service at a moderate price.

Number
C-5

Full Length
5 1/2 in.

Weight per Doz.
3 lbs.

"MASTER" ORANGE CLIPPERS

Designed for ease—speed—accuracy.



Flared handles shaped to fit palm of hand . . . curved blades cut close . . . blunt ends prevent bruising. Large hardened screw bolts reduce wear. Springs made of strong flexible piano wire.

Number	Full Length	Average Weight per Doz.
Master C-6	5½ in.	3 lbs.

KYLE PATTERN LEMON CLIPPER

Especially designed by scientific fruit growers in California for clipping oranges, lemons, and other citrus fruit without bruising the skin.



Number	Full Length	Average Weight per Doz.
C3	6 in.	3¾ lbs.

PRACTICAL ORANGE CLIPPER



Number	Full Length	Average Weight per Doz.
C1	7 in.	3½ lbs.
C2 (with ring)	7½ in.	6¼ lbs.

*Prices and descriptive matter will be furnished
on request for the following:*

TINNER SNIPS

GARDEN SHEARS

GIFT SCISSOR SETS

**DISPLAY CASE ASSORTMENT
(SHEARS AND SCISSORS)**

TINNER SNIP PANELS

SPECIAL NOTICE

Many of our customers complain that the question of guarantee is being badly abused. Demands are being made on them for replacements that are unjust — Articles have been wilfully broken — and, in many instances the replaced articles find their way into pawn shops. Therefore for your own protection until further notice **DO NOT REPLACE ANY ARTICLE OF OUR MAKE UNTIL SAME HAS BEEN RETURNED TO OUR FACTORY FOR EXAMINATION.**

Our goods are made in the best manner possible—We shall cheerfully replace any that accidentally may prove defective — but we will not replace any that have been abused.

J. WISS & SONS CO.

Newark, N. J., U. S. A.

Printed in U.S.A.

